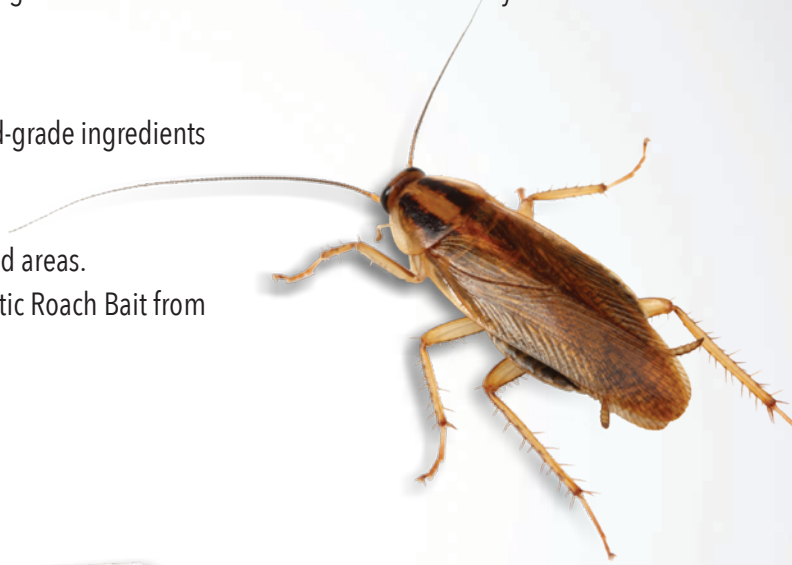


MAGNETIC ROACH BAIT™

Proven Cockroach Solution

Magnetic Roach Bait is designed for the long haul. The paste formula remains edible and attractive to roaches for 30 days, a quarter – even a year. This bait has long been the standard roach treatment in many public housing projects throughout the country.

- Available in cartons of four 1.23 oz. reservoir tubes.
- Boric acid-based paste formula made only with fresh food-grade ingredients for an irresistible taste.
- Does not contain any of the Big-8 allergens.
- Apply as a crack and crevice treatment in commercial food areas.
- The True Blue bait gun is specially made to apply Magnetic Roach Bait from tubes for spot and crack & crevice treatments.
- Highly effective with years of efficacy behind it.
- No known resistance
- For residential and commercial use



True Blue Bait Gun sold separately



MAGNETIC

ROACH BAIT™

For use in and around homes, commercial, industrial, institutional, food and feed handling establishments

ACTIVE INGREDIENT:

Boric Acid (CAS No. 10043-35-3)..... 33.3%

OTHER INGREDIENTS 66.7%

TOTAL 100.0%

EPA Reg. No. 54452-2 EPA Est. 64405-TN-1

Keep Out of Reach of Children

CAUTION

Use only in areas not easily accessible to children and pets.

FIRST AID

If Swallowed:	<ul style="list-style-type: none">• Call a poison control center or doctor immediately for treatment advice.• Have person sip a glass of water if able to swallow.• Do not induce vomiting unless told to do so by a poison control center or doctor.• Do not give anything by mouth to an unconscious person.
If in Eyes:	<ul style="list-style-type: none">• Hold eye open and rinse slowly and gently with water for 15-20 minutes.• Remove contact lenses, if present, after the first 5 minutes, then continue rinsing eye.• Call a poison control center or doctor for treatment advice.
If on Skin or Clothing:	<ul style="list-style-type: none">• Take off contaminated clothing.• Rinse skin immediately with plenty of water for 15-20 minutes.• Call a poison control center or doctor for treatment advice
In case of emergency call a poison control center or doctor for treatment advice. Have the product container or label with you when call or going for treatment.	

PRECAUTIONARY STATEMENTS

HAZARDOUS TO HUMANS AND DOMESTIC ANIMALS

CAUTION

Harmful if swallowed. May cause eye irritation. Avoid eye contact. Wash thoroughly after handling.

DIRECTIONS FOR USE:

It is a violation of Federal law to use this product in a manner inconsistent with its labeling.

The reservoir is designed to be used in conjunction with a bait gun. To use simply attach a filled reservoir of bait to the bait gun. Twist on the dispensing tip. Aim and gently squeeze the trigger.

For containers other than the reservoir, stir well before using.

TO CONTROL COCKROACHES: Apply the paste liberally under and behind refrigerators, stoves, sinks, dishwashers, washing machines and dryers, tubs, into openings around drains, sewers, manholes, water pipe and electrical conduits, in cracks and crevices along baseboards and in corners of cabinets, cupboards, and closets. Remove drawers in kitchen and bathroom cabinets, bedroom dressers and chest of drawers, then apply liberally into each corner of the drawer wells.

Reapply the same as above at least once a year. If reinfestation should occur, reapply bait as needed. Apply in areas inaccessible to children and pets. Avoid contamination of feed and foodstuffs.

DIRECTIONS FOR APPLYING IN NEW CONSTRUCTION TO CONTROL COCKROACHES: When treating large areas, such as wall voids, soffit and subcabinet voids in new and existing construction, apply the paste liberally.

This product may be used in homes, restaurants, and other food handling establishments, markets, schools, warehouses, factories, offices, hotels, motels, hospitals, nursing homes, garages, grocery stores, apartment buildings, new construction, industrial plants, theaters, ships, boats, trains, yachts, camps, mobile homes, buses, zoos, kennels, military bases, libraries and utilities.

CRACK AND CREVICE TREATMENT

FOOD AND FEED HANDLING ESTABLISHMENTS: Places other than private residences in which exposed food or feed is held, processed, prepared or saved.

FOOD AREA – APPLICATION LIMITED TO CRACK AND CREVICE TREATMENT ONLY: Includes areas for receiving, storage, packing (canning, wrapping, boxing) preparing, edible waste storage and enclosed processing systems such as mills, dairies, bakeries, restaurants or anywhere food or feed is stored, processed, prepared or served. Serving areas (when food is exposed and facility is in operation) also would be considered a food area.

Apply in small amounts directly into cracks and crevices using suitable equipment capable of applying insecticide directly into cracks and crevices, in points between different elements of construction, between equipment and floors, openings leading to void and hollow spaces in walls, equipment legs and bases, conduits and motor housings where cockroaches hide.

Care should be taken to avoid depositing the product into exposed food and feed processing, preparation and serving surfaces, or introducing the material into food and or feed processing surfaces to avoid contamination.

APPLICATIONS OF THIS PRODUCT IN THE FOOD AND FEED AREAS OF FOOD HANDLING ESTABLISHMENTS OTHER THAN AS A CRACK AND CREVICE TREATMENT ARE NOT PERMITTED.

SERVING AREAS – Facilities where prepared foods are served, such as dining rooms, but excluding areas where foods may be prepared or held. Apply as a spot treatment to selective surfaces such as baseboards, under elements of construction and into cracks and crevices. Avoid treating surfaces likely to be contacted by food. (Do not apply when facility is in operation or foods are

exposed.) Remove any product left visible on a food surface. After treatment, wash surface.

NON-FOOD AREAS: Include garbage rooms, lavatories (floors, drains to sewer entries & vestibules), offices, locker rooms, machine rooms, boiler rooms, garages, mop closets and storage (after canning or bottling).

Apply to baseboard areas, around water pipes, surfaces behind and beneath sinks, lockers, tables, pallets and similar areas where insects hide or through which they may enter.

NOTE: Do not apply bait to areas which have been recently sprayed with insecticides or spray insecticides over bait placements, as this may cause the bait to become repellent. Do not place bait in locations that are routinely washed, as bait will be removed by washing. Do not place treatments in locations where routine cleansing operations may transfer diluted bait to food or food preparation surfaces.

Numerous smaller placements will provide faster control than a few larger spots, especially for German cockroach control.

STORAGE AND DISPOSAL

Do not contaminate water, food or feed by storage or disposal.

STORAGE: Store in a dry place. Do not store where children or animals may gain access. **PESTICIDE DISPOSAL:** Wastes resulting from the use of this product may be disposed of on site or at an approved waste disposal facility. **CONTAINER DISPOSAL:** Nonrefillable containers. Do not reuse or refill. Wrap used reservoirs and place in the trash can.

WARRANTY DISCLAIMER

Manufacturer warrants that this product conforms to the chemical description on the label and is reasonably fit for the purposes stated on the label when used in strict accordance with the directions, subject to the inherent risks set forth below. **TO THE EXTENT NOT PROHIBITED BY APPLICABLE LAW, MANUFACTURER MAKES NO OTHER EXPRESS OR IMPLIED WARRANTY OF MERCHANTABILITY, FITNESS FOR A PARTICULAR PURPOSE OR ANY OTHER EXPRESS OR IMPLIED WARRANTY.**

Inherent Risks of Use

The directions for use of this product are believed to be adequate and must be carefully followed. It is impossible to eliminate all risks associated with use of this product. Lack of performance or other unintended consequences may result because of such factors as use of the product contrary to label instructions, abnormal conditions, the presence of other materials, climatic conditions or the manner of use/application, all of which are beyond the control of the Manufacturer. The buyer/user assumes all such risks.

Limitation of Remedies

To the extent not prohibited by applicable law, the exclusive remedy for losses or damages resulting from this product (including claims based on contract, negligence, strict liability or other legal theories) shall be limited to, at Manufacturer's election, one of the following:

1. Refund of purchase price paid by buyer or user for product bought, or
2. Replacement of amount of product used.

To the extent not prohibited by applicable law: a) Manufacturer shall not be liable for losses or damages resulting from handling or use of this product unless Manufacturer is promptly notified of such loss or damage in writing; and b) **IN NO CASE SHALL MANUFACTURER BE LIABLE FOR CONSEQUENTIAL OR INCIDENTAL DAMAGES OR LOSSES, INCLUDING WITHOUT LIMIT, HEALTH RELATED DAMAGES OR INJURIES.**

The terms of this **Warranty Disclaimer** and **Limitation of Remedies** cannot be varied by any written or verbal statements or agreements. No employee or sales agent of Manufacturer or the seller is authorized to vary or exceed the terms of this **Warranty Disclaimer** or **Limitation of Remedies** in any manner.

It is not intended that this product be used to practice any applicable patent, whether mentioned or not, without procurement of a license, if necessary, from the owner, following investigation by the user.



100 Nisus Drive • Rockford, TN 37853 USA
(800) 264-0870

Magnetic Roach Bait and Nisus Corporation are trademarks or registered trademarks of Nisus Corporation.
©2020 Nisus Corporation #MRB-SL-0520-SAL053119

Made in the U.S.A.

SAFETY DATA SHEET

MAGNETIC

ROACH BAIT™

Health Emergencies: INFOTRAC® (800) 535-5053

1. PRODUCT AND COMPANY INFORMATION**Product Identity:** Magnetic Roach Bait™

Recommended use of the chemical and restrictions on use: A ready-to-use specifically formulated borate paste product that kills roaches. Read and understand the entire label before using. Use only according to label directions. It is a violation of Federal law to use this product in a manner inconsistent to label directions.

Manufacturer: Nisus Corporation
100 Nisus Drive
Rockford, TN 37853

Telephone: Phone: (800) 264-0870
Fax: (865) 577-5825

Emergency Phone: 800-535-5053 (INFOTRAC)

SDS Date of Preparation: 05/08/20

2. HAZARDS IDENTIFICATION**GHS Classification:**

Physical	Health	Environment
Not Hazardous	Not Hazardous	Not Hazardous

GHS Label Elements:

None Required

TE

Statements of Hazard

None Required

Precautionary Statements

None Required

3. COMPOSITION/INFORMATION ON INGREDIENTS

Component	CAS No.	Amount
Boric Acid	10043-35-3	33%
Glycerin	56-81-5	1-10%
Non-Hazardous Ingredients	Proprietary	57-66%

The exact formulation is being withheld as a trade secret.

4. FIRST AID MEASURES

Eye: Flush victim's eyes with large quantities of water, while holding the eyelids apart. Get medical attention if irritation develops or persists.

Skin: Wash skin thoroughly with soap and water. Get medical attention if irritation develops. Remove and launder clothing before re-use.

Ingestion: Do not induce vomiting unless directed to do so by a medical professional. Get medical attention for large ingestions or if symptoms develop or if you feel unwell.

Inhalation: If breathing is difficult or irritation persists, get medical attention.

Most important Symptoms: May cause slight eye irritation. Mist or dust from dried paste may cause irritation to nose and throat.

Indication of immediate medical attention/special treatment: Immediate medical attention should not be required.

5. FIRE FIGHTING MEASURES

Suitable (and Unsuitable) Extinguishing Media: Use media appropriate for surrounding fire.

Specific hazards arising from the chemical: Burning may produce smoke, carbon monoxide and carbon dioxide.

Special Protective Equipment and Precautions for Fire-Fighting Instructions: Firefighters should wear positive pressure self-contained breathing apparatus and full protective clothing. Contain runoff.

6. ACCIDENTAL RELEASE MEASURES

Personal Precautions, Protective Equipment, and Emergency Procedures: Wear appropriate protective clothing as described in Section 8. Do not apply directly to water or contaminate water.

Methods and Materials for Containment and Cleaning Up: Scoop and place in appropriate containers for disposal. Clean spill area thoroughly. Prevent spill from entering sewers and water courses. Report releases as required by local, state and federal authorities.

7. HANDLING AND STORAGE

Precautions for Safe Handling: Avoid contact with the eyes, skin and clothing. Wear protective clothing and equipment as described in Section 8. Wash thoroughly with soap and water after handling. Remove contaminated clothing immediately and wash before reuse. Remove PPE immediately after handling. Wash thoroughly after using and change into clean clothing. Keep containers closed when not in use. Refer product label for additional information on use and handling.

Nonrefillable container. Do not reuse containers. Product residues in empty containers can be hazardous. Follow all SDS precautions when handling empty containers.

Conditions for Safe Storage, Including Any Incompatibilities:

Store in a cool, dry area away from incompatible materials. Do not store where children or animals may gain access. Do not freeze.

8. EXPOSURE CONTROLS/PERSONAL PROTECTION**Exposure Guidelines:**

Non-Hazardous Ingredient	None Established
Boric Acid (as borate compounds)	2 mg/m ³ TWA, 6 mg/m ³ STEL ACGIH TLV (Inhalable)
Glycerin	5 mg/m ³ (respirable fraction), 15 mg/m ³ (total dust) TWA OSHA PEL (as mist)

Engineering Controls: Use with adequate ventilation to maintain exposure levels below the occupational exposure limits. Refer to product label for additional information.

Respiratory Protection: In operations where exposure levels are exceeded, a NIOSH approved respirator with dust/mist cartridges appropriate for the form and concentration of the contaminants should be used. Selection and use of respiratory equipment must be in accordance with OSHA 1910.134 and good industrial hygiene practice. Refer to the product label for additional information. For use of this product, none generally required.

Skin Protection: None required

Eye Protection: None required

Other: None required

9. PHYSICAL AND CHEMICAL PROPERTIES

Appearance And Odor: Brown paste with pungent odor

Physical State: Paste

Odor Threshold: Not established

Vapor Density: N/A

Initial Boiling Point/Range: N/A

Solubility In Water: Soluble

Vapor Pressure: N/A

Relative Density: 10.5 lbs/gallon

Evaporation Rate: N/A

Melting/Freezing Point: Not determined

pH: 3.7

Percent Volatile: None

Octanol/Water Coefficient: Not determined

Solubility: Water

Decomposition Temperature: N/A

Viscosity: N/A

Flammability (solid, gas): N/A

Flashpoint: N/A

Autoignition Temperature: None

Flammable Limits: LEL: Not determined

UEL: Not determined

10. STABILITY AND REACTIVITY

Reactivity: Not normally reactive

Chemical Stability: Stable under normal storage and handling conditions.

Possibility of Hazardous Reactions: None known.

Conditions to Avoid: Avoid generating dust.

Incompatible Materials: Avoid oxidizing agents.

Hazardous Decomposition Products: When heated to decomposition emits smoke, carbon monoxide and carbon dioxide.

11. TOXICOLOGICAL INFORMATION

HEALTH HAZARDS:

Ingestion: May be harmful if large quantities are ingested.

Inhalation: Inhalation of mists or dust from dried product may cause irritation of the nose, throat and upper respiratory tract.

Eye: May cause slight irritation.

Skin: Not expected to cause irritation.

Chronic: Borates have been shown to have some chronic toxicity in animals fed high doses but this has not been found in humans.

Sensitization: This material is not expected to cause sensitization.

Carcinogenicity: None of the components is listed as a carcinogen or suspected carcinogen by IARC, NTP or OSHA.

Germ Cell Mutagenicity: No data available

Reproductive Toxicity: Borates have been found to have some reproductive toxicity in animals, but this has not been found in humans.

Numerical Measures of Toxicity:

Product Toxicity Data:

Oral rat LD₅₀: >5000 mg/kg, Dermal rabbit LD₅₀: >2000 mg/kg

12. ECOLOGICAL INFORMATION

This product breaks down naturally in the environment to provide organic matter and boron micro nutrients. Boron occurs naturally in sea water at an average concentration of 5 mg B/l and fresh water at 1 mg B/l or less. In dilute aqueous solutions the predominant boron species present is undissociated boric acid.

Ecotoxicity:

Boric Acid: 96 hr LC₅₀ *Pimephales promelas* 79.7 mg/L, 48 hr LC₅₀ *Ceriodaphnia dubia* 102 mg/L

Persistence and Degradability: Boron is naturally occurring and ubiquitous in the environment. Magnetic Roach Bait decomposes in the environment to boron and organic matter.

Bioaccumulative Potential: Not determined.

Mobility in Soil: Boric acid is soluble in water and is leachable through normal soil.

Other Adverse Effects: Some plants are sensitive to boron. Do not treat vegetation in the environment. This product is designed to be used for certain types of insects. Use product only as directed on the label. Do not apply directly to water. Do not contaminate water when disposing of equipment washwaters or rinsate. See product label for full instructions and restrictions on use.

13. DISPOSAL CONSIDERATION

Do not contaminate water when disposing of equipment washwaters or rinsate. Wastes resulting from the use of this product may be disposed of on site or at an approved waste disposal facility. Non-refillable container; do not reuse or refill this container. Completely empty container into application equipment, then offer for recycling, if available; otherwise dispose of empty container in a sanitary landfill or by incineration. Never place unused product down any indoor or outdoor drain. Dispose in accordance with local, state and federal environmental regulations.

14. TRANSPORTATION INFORMATION

DOT Hazardous Materials Description: Not Regulated

15. REGULATORY INFORMATION

This chemical is a pesticide product registered by the United States Environmental Protection Agency and is subject to certain labeling requirements under federal pesticide law. These requirements differ from the classification criteria and hazard information required for safety data sheets (SDS), and for workplace labels of non-pesticide chemicals. The hazard information required on the pesticide label is

reproduced below. The pesticide label also includes other important information, including directions for use.

FIFRA Labeling:

Magnetic Roach Bait

EPA Reg. No. 54452-2

Keep Out of Reach of Children

CAUTION

PRECAUTIONARY STATEMENTS

Hazards to Humans & Domestic Animals

Caution: Harmful if swallowed. May cause eye irritation. Avoid eye contact. Wash thoroughly after handling.

CERCLA: This product is not subject to reporting under CERCLA. Some states have more stringent reporting requirements. Report all spills in accordance with local, state, and federal regulations.

SARA Hazard Category (311/312): Not hazardous

SARA 313: This product contains the following chemicals subject to Annual Release Reporting Requirements Under SARA Title III, Section 313 (40 CFR 372):

None

EPA TSCA Inventory: This product is regulated under FIFRA, thus exempt.

16. OTHER INFORMATION

NFPA Rating:

Health = 0 Flammability = 0 Instability = 0

HMIS Rating:

Health = 1 Flammability = 0 Physical Hazard = 0

SDS Revision History: 03/23/15: New SDS

05/08/20: Revised

WARRANTY DISCLAIMER

The information, data and recommendations contained herein are believed to be accurate but may not be all inclusive and should only be used as a guide. The information is furnished upon the condition that the person receiving it shall make his own determination of the suitability of the product for his particular use and on condition that they assume the risk of the use thereof. With respect to this publication and the product related thereto, unless otherwise expressly provided by Manufacturer in writing, **MANUFACTURER MAKES NO EXPRESS OR IMPLIED WARRANTY OF MERCHANTABILITY, FITNESS FOR A PARTICULAR PURPOSE OR ANY OTHER EXPRESS OR IMPLIED WARRANTY.**

Remedy/Liability Limits

The exclusive remedy for losses or damages resulting from this publication or the related product (including claims based on contract, negligence, strict liability or other legal theories) shall be limited to, at Manufacturer's sole election, one of the following:

1. Refund of purchase price paid by buyer or user for product bought, or
2. Replacement of amount of product used.

Manufacturer shall not be liable for losses or damages resulting from use of this publication or handling or use of this product, **IN NO CASE SHALL MANUFACTURER BE LIABLE FOR CONSEQUENTIAL OR INCIDENTAL DAMAGES OR LOSSES, INCLUDING WITHOUT LIMIT, HEALTH RELATED DAMAGES OR INJURIES.**

The terms of this **Warranty Disclaimer** and **Remedy/Liability Limits** cannot be varied by any written or verbal statements or agreements. No employee or sales agent of Manufacturer or the seller is authorized to vary or exceed the terms of this **Warranty Disclaimer** or **Limitation of Remedies** in any manner.



NISUS
CORPORATION

100 Nisus Drive • Rockford, TN 37853 USA • (800) 264-0870

Magnetic Roach Bait and Nisus Corporation are trademarks or registered trademarks of Nisus Corporation. ©2020 Nisus Corporation • #MRB-SDS-050820

NOTES



NISUS[®]
CORPORATION

100 Nisus Drive • Rockford, TN 37853 • 800-264-0870